

2.7mm/3.5mm FIBULA DISTAL | PERONÉ DISTAL

Box and Trays Caja y Estuches

Ref.	Box and Trays Caja y Estuches
09.50.03.00155	Box w/ Brackets, 250 x 330 x 50mm, Fibula Distal 2.7/3.5mm Caja con Soportes, Peroné Distal 2.7/3.5mm
09.50.06.00155	Implant Tray, Fibula Distal 2.7/3.5mm Bandeja Implantas, Peroné Distal 2.7/3.5mm

PLATES | PLACAS

Special Locking Plate, Fibula, Lateral/Distal, Left Placa Bloqueo, Peroné, Lateral/Distal, Izquierda

Ref.	Nº Holes Nº Agujeros	   
26.06.17.01003	03	
26.06.17.01004	04	
26.06.17.01005	05	
26.06.17.01006	06	
26.06.17.01007	07	
26.06.17.01009	09	
26.06.17.01010	10	
26.06.17.01011	11	



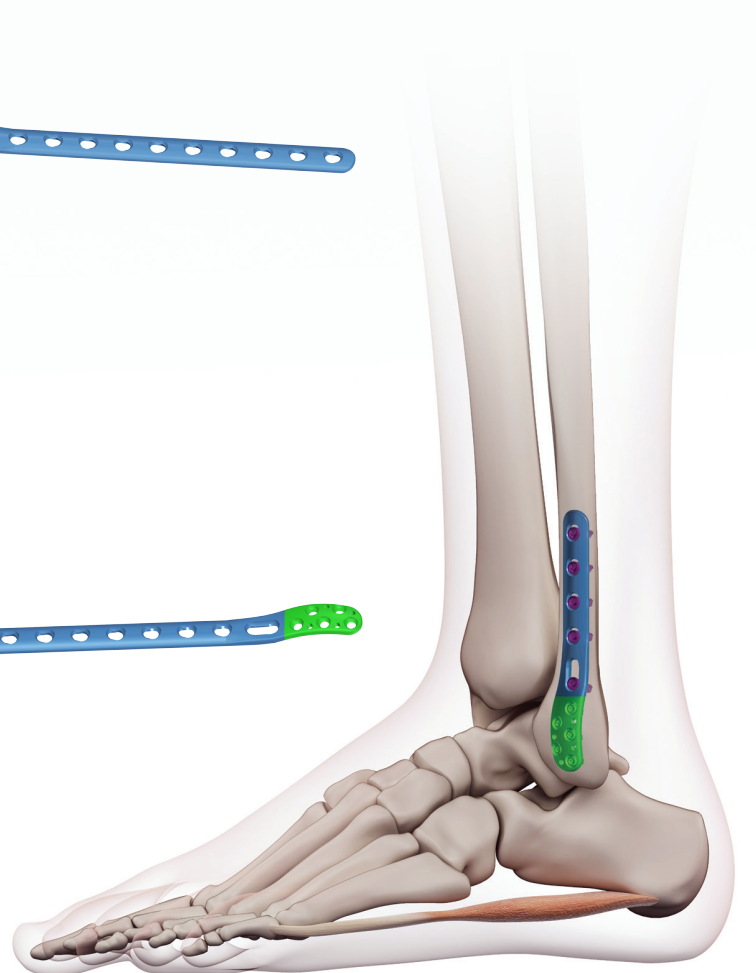
Special Locking Plate, Fibula, Lateral/Distal, Right Placa Bloqueo, Peroné, Lateral/Distal, Derecha

Ref.	Nº Holes Nº Agujeros	   
26.06.17.02003	03	
26.06.17.02004	04	
26.06.17.02005	05	
26.06.17.02006	06	
26.06.17.02007	07	
26.06.17.02009	09	
26.06.17.02010	10	
26.06.17.02011	11	






Special Locking Plate, Fibula, Posterior/Distal, Left Placa Bloqueo, Peroné, Posterior/Distal, Izquierda

Ref.	Nº Holes Nº Agujeros	   
26.06.20.01003	03	
26.06.20.01004	04	
26.06.20.01005	05	
26.06.20.01006	06	
26.06.20.01007	07	
26.06.20.01009	09	
26.06.20.01010	10	
26.06.20.01011	11	



2.7mm/3.5mm FIBULA DISTAL | PERONÉ DISTAL

Special Locking Plate, Fibula, Posterior/Distal, Right
Placa Bloqueo, Peroné, Posterior/Distal, Derecha

Ref.	N° Holes N° Agujeros	   
26.06.20.02003	03	
26.06.20.02004	04	
26.06.20.02005	05	
26.06.20.02006	06	
26.06.20.02007	07	
26.06.20.02009	09	
26.06.20.02010	10	
26.06.20.02011	11	



SCREWS | TORNILLOS

Ø2,4mm

Cortical Screw

Tornillo Cortical

Ref.	Length Longitud	
15.04.01.24006	06mm	
15.04.01.24008	08mm	
15.04.01.24010	10mm	
15.04.01.24012	12mm	
15.04.01.24014	14mm	
15.04.01.24016	16mm	
15.04.01.24018	18mm	
15.04.01.24020	20mm	
15.04.01.24022	22mm	
15.04.01.24024	24mm	
15.04.01.24026	26mm	
15.04.01.24028	28mm	
15.04.01.24030	30mm	



Ø2,7mm

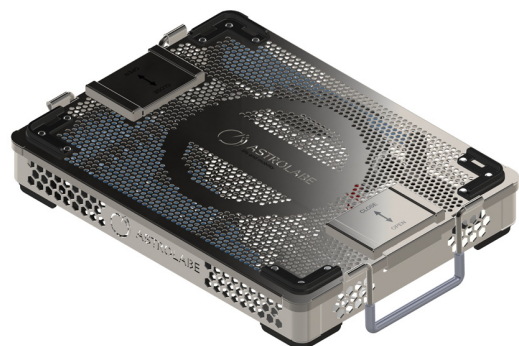
Locking Screw

Tornillo Bloqueo

Ref.	Length Longitud	
15.14.01.27008	08mm	
15.14.01.27010	10mm	
15.14.01.27012	12mm	
15.14.01.27014	14mm	
15.14.01.27016	16mm	
15.14.01.27018	18mm	
15.14.01.27020	20mm	
15.14.01.27022	22mm	
15.14.01.27024	24mm	
15.14.01.27026	26mm	
15.14.01.27028	28mm	
15.14.01.27030	30mm	



2.7mm/3.5mm FIBULA DISTAL | PERONÉ DISTAL



INSTRUMENTS INSTRUMENTOS		
09.01.01.18100	Drill Bit, Ø1.8 x 100mm, twist length 30mm, AO Coupling <i>Broca Ø1.8 x 100mm, H-30, AO</i>	2
09.01.14.20100	Drill Bit, Ø2.0 x 100mm, twist length 30mm, AO Coupling, Green Code <i>Broca Ø2.0 x 100mm, H-30, AO, Ver</i>	2
09.05.00.24000	Drill Guide, Ø2.4/Ø1.8mm, Universal <i>Guía de Perforación Ø2.4/Ø1.8mm, Universal</i>	1
09.05.05.20000	Drill Guide, Ø2.0mm, Threaded <i>Guía de Perforación Ø2.0mm, Roscado</i>	2
09.06.04.24000	Holding Sleeve, Ø2.4mm <i>Manga de Sujeción Ø2.4mm</i>	1
09.07.04.08110	Shaft Screwdriver, Torx-8, 110mm, AO Coupling <i>Destornillador, TX-8, 110mm, AO</i>	2
09.08.01.00042	Depth Gauge, 40mm, Short <i>Medidor de Profundidad 40mm, Corto</i>	1
09.10.01.00000	Screw Forceps, Small <i>Pinza para Tornillos, Pequeña</i>	1

Ø2.4MM CORTICAL SCREW Ø2.4MM TORNILLO CORTICAL		
15.04.01.24006	Cortical Screw, Ti, Ø2.4 x 6mm Torx <i>Tornillo Cortical, Ti, Ø2.4 x 6mm TX</i>	5
15.04.01.24008	Cortical Screw, Ti, Ø2.4 x 8mm Torx <i>Tornillo Cortical, Ti, Ø2.4 x 8mm TX</i>	5
15.04.01.24010	Cortical Screw, Ti, Ø2.4 x 10mm Torx <i>Tornillo Cortical, Ti, Ø2.4 x 10mm TX</i>	5
15.04.01.24012	Cortical Screw, Ti, Ø2.4 x 12mm Torx <i>Tornillo Cortical, Ti, Ø2.4 x 12mm TX</i>	5
15.04.01.24014	Cortical Screw, Ti, Ø2.4 x 14mm Torx <i>Tornillo Cortical, Ti, Ø2.4 x 14mm TX</i>	5
15.04.01.24016	Cortical Screw, Ti, Ø2.4 x 16mm Torx <i>Tornillo Cortical, Ti, Ø2.4 x 16mm TX</i>	5
15.04.01.24018	Cortical Screw, Ti, Ø2.4 x 18mm Torx <i>Tornillo Cortical, Ti, Ø2.4 x 18mm TX</i>	5
15.04.01.24020	Cortical Screw, Ti, Ø2.4 x 20mm Torx <i>Tornillo Cortical, Ti, Ø2.4 x 20mm TX</i>	5
15.04.01.24022	Cortical Screw, Ti, Ø2.4 x 22mm Torx <i>Tornillo Cortical, Ti, Ø2.4 x 22mm TX</i>	5
15.04.01.24024	Cortical Screw, Ti, Ø2.4 x 24mm Torx <i>Tornillo Cortical, Ti, Ø2.4 x 24mm TX</i>	5
15.04.01.24026	Cortical Screw, Ti, Ø2.4 x 26mm Torx <i>Tornillo Cortical, Ti, Ø2.4 x 26mm TX</i>	5
15.04.01.24028	Cortical Screw, Ti, Ø2.4 x 28mm Torx <i>Tornillo Cortical, Ti, Ø2.4 x 28mm TX</i>	5
15.04.01.24030	Cortical Screw, Ti, Ø2.4 x 30mm Torx <i>Tornillo Cortical, Ti, Ø2.4 x 30mm TX</i>	5

Ø2.7MM LOCKING SCREW Ø2.7MM TORNILLO DE BLOQUEO		
15.14.01.27008	Locking Screw, Ti, Ø2.7 x 8mm Torx <i>Tornillo Bloqueo, Ti, Ø2.7 x 8mm TX</i>	10
15.14.01.27010	Locking Screw, Ti, Ø2.7 x 10mm Torx <i>Tornillo Bloqueo, Ti, Ø2.7 x 10mm TX</i>	10
15.14.01.27012	Locking Screw, Ti, Ø2.7 x 12mm Torx <i>Tornillo Bloqueo, Ti, Ø2.7 x 12mm TX</i>	10
15.14.01.27014	Locking Screw, Ti, Ø2.7 x 14mm Torx <i>Tornillo Bloqueo, Ti, Ø2.7 x 14mm TX</i>	10
15.14.01.27016	Locking Screw, Ti, Ø2.7 x 16mm Torx <i>Tornillo Bloqueo, Ti, Ø2.7 x 16mm TX</i>	10
15.14.01.27018	Locking Screw, Ti, Ø2.7 x 18mm Torx <i>Tornillo Bloqueo, Ti, Ø2.7 x 18mm TX</i>	10
15.14.01.27020	Locking Screw, Ti, Ø2.7 x 20mm Torx <i>Tornillo Bloqueo, Ti, Ø2.7 x 20mm TX</i>	10
15.14.01.27022	Locking Screw, Ti, Ø2.7 x 22mm Torx <i>Tornillo Bloqueo, Ti, Ø2.7 x 22mm TX</i>	10
15.14.01.27024	Locking Screw, Ti, Ø2.7 x 24mm Torx <i>Tornillo Bloqueo, Ti, Ø2.7 x 24mm TX</i>	10
15.14.01.27026	Locking Screw, Ti, Ø2.7 x 26mm Torx <i>Tornillo Bloqueo, Ti, Ø2.7 x 26mm TX</i>	10
15.14.01.27028	Locking Screw, Ti, Ø2.7 x 28mm Torx <i>Tornillo Bloqueo, Ti, Ø2.7 x 28mm TX</i>	10
15.14.01.27030	Locking Screw, Ti, Ø2.7 x 30mm Torx <i>Tornillo Bloqueo, Ti, Ø2.7 x 30mm TX</i>	10

PLATES PLACAS		
26.06.17.01003	Special Locking Plate, Ti, Fibula, Lateral/Distal, Left, 03 Holes <i>Placa Bloq, Ti, Peroné, Lat/Dist, Izquierda, 3-A</i>	1
26.06.17.01004	Special Locking Plate, Ti, Fibula, Lateral/Distal, Left, 04 Holes <i>Placa Bloq, Ti, Peroné, Lat/Dist, Izquierda, 4-A</i>	1
26.06.17.01005	Special Locking Plate, Ti, Fibula, Lateral/Distal, Left, 05 Holes <i>Placa Bloq, Ti, Peroné, Lat/Dist, Izquierda, 5-A</i>	1
26.06.17.01006	Special Locking Plate, Ti, Fibula, Lateral/Distal, Left, 06 Holes <i>Placa Bloq, Ti, Peroné, Lat/Dist, Izquierda, 6-A</i>	1
26.06.17.01007	Special Locking Plate, Ti, Fibula, Lateral/Distal, Left, 07 Holes <i>Placa Bloq, Ti, Peroné, Lat/Dist, Izquierda, 7-A</i>	1
26.06.17.01009	Special Locking Plate, Ti, Fibula, Lateral/Distal, Left, 09 Holes <i>Placa Bloq, Ti, Peroné, Lat/Dist, Izquierda, 9-A</i>	1
26.06.17.01011	Special Locking Plate, Ti, Fibula, Lateral/Distal, Left, 11 Holes <i>Placa Bloq, Ti, Peroné, Lat/Dist, Izquierda, 11-A</i>	1
26.06.17.02003	Special Locking Plate, Ti, Fibula, Lateral/Distal, Right, 03 Holes <i>Placa Bloq, Ti, Peroné, Lat/Dist, Derecha, 3-A</i>	1
26.06.17.02004	Special Locking Plate, Ti, Fibula, Lateral/Distal, Right, 04 Holes <i>Placa Bloq, Ti, Peroné, Lat/Dist, Derecha, 4-A</i>	1
26.06.17.02005	Special Locking Plate, Ti, Fibula, Lateral/Distal, Right, 05 Holes <i>Placa Bloq, Ti, Peroné, Lat/Dist, Derecha, 5-A</i>	1
26.06.17.02006	Special Locking Plate, Ti, Fibula, Lateral/Distal, Right, 06 Holes <i>Placa Bloq, Ti, Peroné, Lat/Dist, Derecha, 6-A</i>	1
26.06.17.02007	Special Locking Plate, Ti, Fibula, Lateral/Distal, Right, 07 Holes <i>Placa Bloq, Ti, Peroné, Lat/Dist, Derecha, 7-A</i>	1
26.06.17.02009	Special Locking Plate, Ti, Fibula, Lateral/Distal, Right, 09 Holes <i>Placa Bloq, Ti, Peroné, Lat/Dist, Derecha, 9-A</i>	1
26.06.17.02011	Special Locking Plate, Ti, Fibula, Lateral/Distal, Right, 11 Holes <i>Placa Bloq, Ti, Peroné, Lat/Dist, Derecha, 11-A</i>	1
26.06.20.01003	Special Locking Plate, Ti, Fibula, Posterior/Distal, Left, 03 Holes <i>Placa Bloq, Ti, Peroné, Post/Dist, Izquierda, 3-A</i>	1
26.06.20.01004	Special Locking Plate, Ti, Fibula, Posterior/Distal, Left, 04 Holes <i>Placa Bloq, Ti, Peroné, Post/Dist, Izquierda, 4-A</i>	1
26.06.20.01005	Special Locking Plate, Ti, Fibula, Posterior/Distal, Left, 05 Holes <i>Placa Bloq, Ti, Peroné, Post/Dist, Izquierda, 5-A</i>	1
26.06.20.01006	Special Locking Plate, Ti, Fibula, Posterior/Distal, Left, 06 Holes <i>Placa Bloq, Ti, Peroné, Post/Dist, Izquierda, 6-A</i>	1
26.06.20.01007	Special Locking Plate, Ti, Fibula, Posterior/Distal, Left, 07 Holes <i>Placa Bloq, Ti, Peroné, Post/Dist, Izquierda, 7-A</i>	1
26.06.20.01009	Special Locking Plate, Ti, Fibula, Posterior/Distal, Left, 09 Holes <i>Placa Bloq, Ti, Peroné, Post/Dist, Izquierda, 9-A</i>	1
26.06.20.01011	Special Locking Plate, Ti, Fibula, Posterior/Distal, Left, 11 Holes <i>Placa Bloq, Ti, Peroné, Post/Dist, Izquierda, 11-A</i>	1
26.06.20.02003	Special Locking Plate, Ti, Fibula, Posterior/Distal, Right, 03 Holes <i>Placa Bloq, Ti, Peroné, Post/Dist, Derecha, 3-A</i>	1
26.06.20.02004	Special Locking Plate, Ti, Fibula, Posterior/Distal, Right, 04 Holes <i>Placa Bloq, Ti, Peroné, Post/Dist, Derecha, 4-A</i>	1
26.06.20.02005	Special Locking Plate, Ti, Fibula, Posterior/Distal, Right, 05 Holes <i>Placa Bloq, Ti, Peroné, Post/Dist, Derecha, 5-A</i>	1
26.06.20.02006	Special Locking Plate, Ti, Fibula, Posterior/Distal, Right, 06 Holes <i>Placa Bloq, Ti, Peroné, Post/Dist, Derecha, 6-A</i>	1
26.06.20.02007	Special Locking Plate, Ti, Fibula, Posterior/Distal, Right, 07 Holes <i>Placa Bloq, Ti, Peroné, Post/Dist, Derecha, 7-A</i>	1
26.06.20.02009	Special Locking Plate, Ti, Fibula, Posterior/Distal, Right, 09 Holes <i>Placa Bloq, Ti, Peroné, Post/Dist, Derecha, 9-A</i>	1
26.06.20.02011	Special Locking Plate, Ti, Fibula, Posterior/Distal, Right, 11 Holes <i>Placa Bloq, Ti, Peroné, Post/Dist, Derecha, 11-A</i>	1